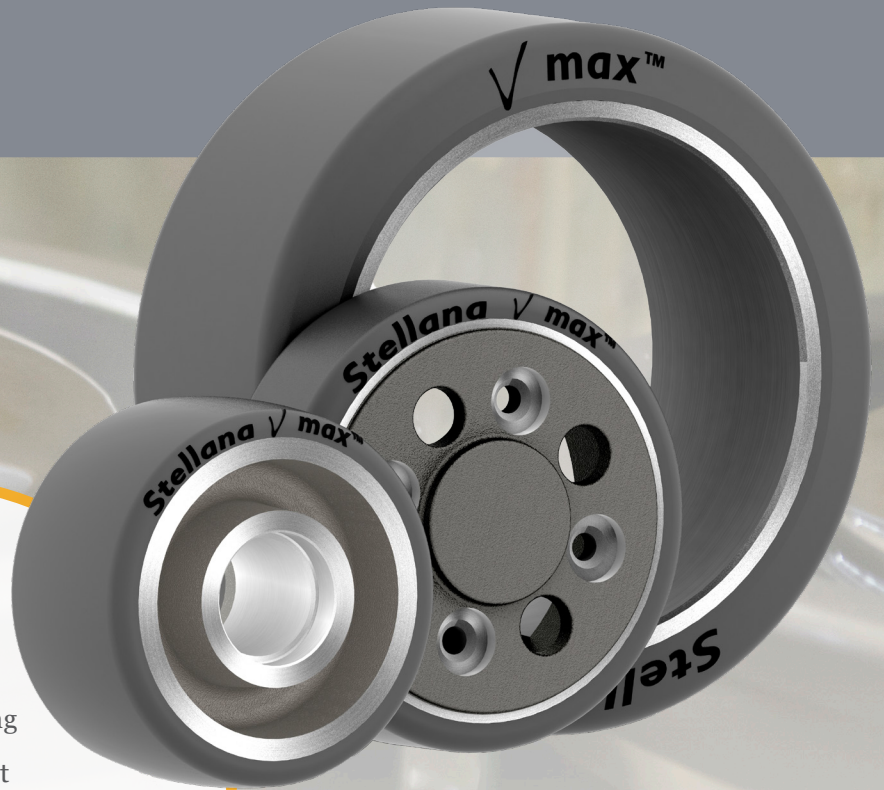


# Vmax™

## The Most Extreme Environments

Excels in environments faced with ultra-high loads, high speeds, chemicals or oils.



**Vmax™ is ideal for industries including:**

- Material Handling
- Heavy Equipment
- Caster Applications
- Engineered Wheels
- Outdoor Maintenance
- Transportation & Logistics



## Vmax™ is a 93 shore A polyurethane

No other tire compound in the world delivers the performance characteristics of Vmax™. The Vmax™ has the highest cut/tear rating in the lift truck industry, and its chunking resistance is unparalleled. Engineered for ultra-high loads and speeds, this polyurethane wheel is your answer when all else fails. This polyurethane tire will also withstand stubborn substances such as chemicals and oil.

### Applications Include

- Drive Tires
- Load Wheels
- Stabilizer Wheels
- AGVs, ASRs, Robots
- Caster Wheels
- Bogie & Idler Wheels
- Conveyors
- Cargo Dollies
- Container Loaders
- Custom Designs for Unique Applications



### Other Features

#### Excellent for:

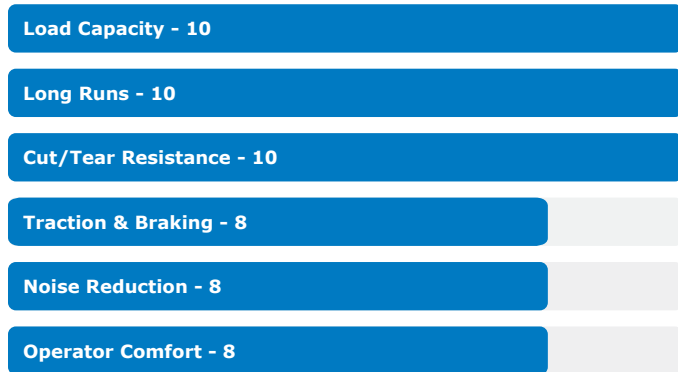
Rough floors, traveling over expansion joints, high-speed applications.

#### Performance strengths:

Excellent thermal dispersion, zero flat-spotting, non-marking.

#### Also available in multiple tread profiles

### Performance Attributes



### Technical Data

Hardness (Shore A)	93A
Split/Tear (pli)	160
Tensile Strength (PSI)	6300
Elongation (%)	525
Compression Set (%)	24
Bayshore Resilience	56
DIN Abrasion (mm3)	36



### What to expect from a Stellana wheel

Stellana produces wheels and tires with the highest standard of craftsmanship. Our products offer the lowest cost of ownership and longest service life found in our industry. You will never find debonding in our products or any deviation from wheel to wheel because we use the strictest standards to measure every aspect of production.